
Comfort-Cire®

Century®

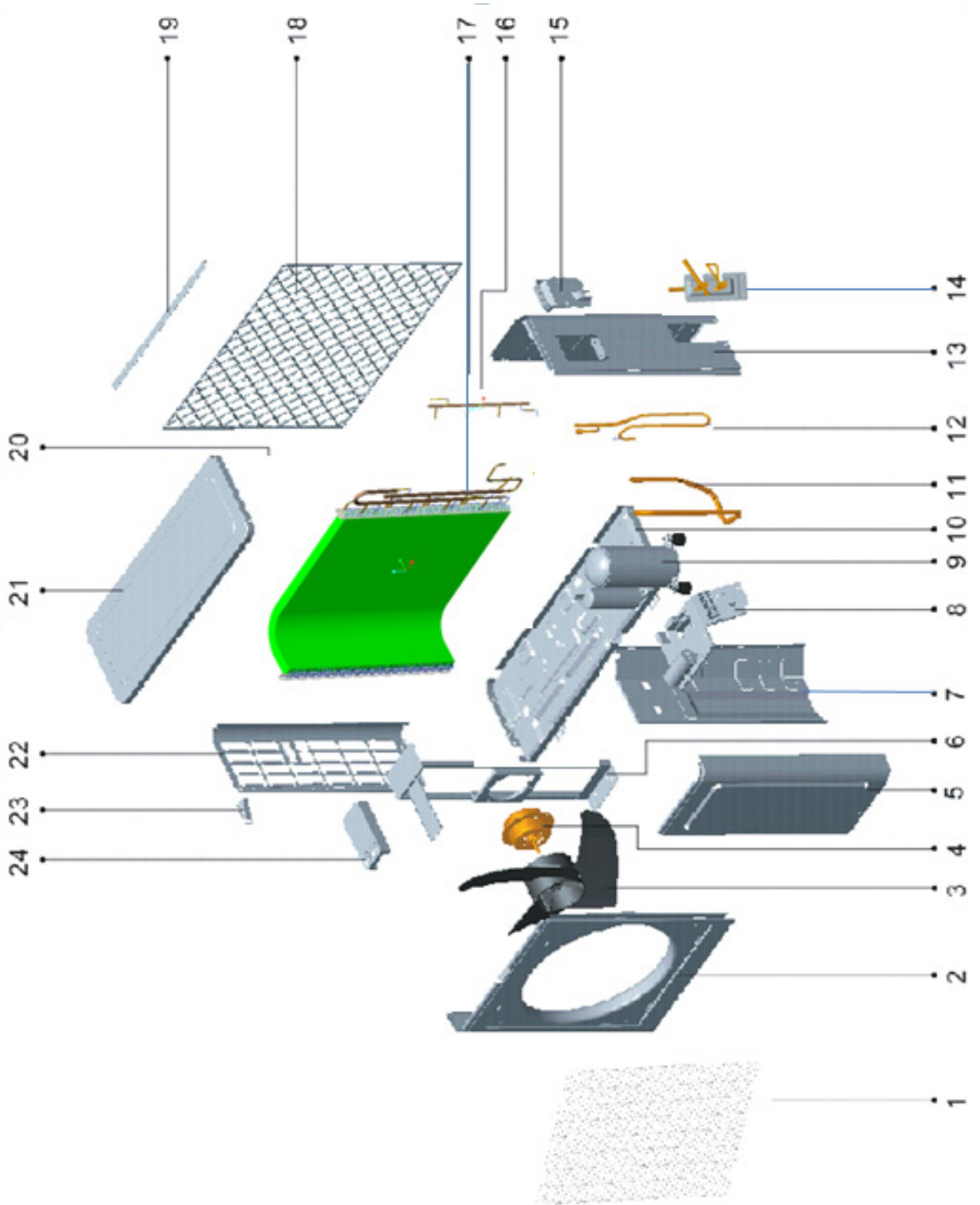
MARS
Delivering Confidence

PARTS LIST

Horizontal/Side Discharge Condensing Units

CMA1418SF-1

EXPLODED VIEW



REPLACEMENT PARTS

Location	Part Name	Quantity	Part No.
1	Net cover	1	802900800073
2	Panel	1	801219900307
3	Propeller fan	1	801100300012
4	Outdoor motor(YDK-60A-6CF)	1	802400400427
5	Maintenance panel	1	801219900399
6	Support for motor	1	801219900286
7	Bulkhead	1	801228200073
8	The electric control parts	1	803327890007
9	Compressor assy	1	801427890001
10	Chassis	1	801219900633
11	Air-returning pipe assy	1	801627890043
12	Compressor exhaust pipe	1	801627890040
13	Right separating board	1	801223600037
14	Base board for valve assy	1	801232490022
14.1	Base board for valve	1	801219900098
14.2	Service valve (gas)	1	801600200010
14.3	Service valve (liquid)	1	801600200009
15	Pull handle	1	801227890034
16	Condenser junction tube assembly	1	801632490139
17	Condenser collector assembly	1	801632490142
18	Back mesh	1	801128200002
19	Screen connecting angle	1	802900700001
20	Condenser parts	1	801532490027
21	Top cover board parts	1	801223600012
22	Left separating board	1	801223600036
23	Pull handle	1	801119900034
24	Motor bracket foam	1	802219900005

Due to ongoing product improvements, specifications and dimensions are subject to change and correction without notice or incurring obligations. Determining the application and suitability for use of any product is the responsibility of the installer. Additionally, the installer is responsible for verifying dimensional data on the actual product prior to beginning any installation preparations.

Incentive and rebate programs have precise requirements as to product performance and certification. All products meet applicable regulations in effect on date of manufacture; however, certifications are not necessarily granted for the life of a product. Therefore, it is the responsibility of the applicant to determine whether a specific model qualifies for these incentive/rebate programs.

Comfort-Aire®

1900 Wellworth Ave., Jackson, MI 49203 • Ph. 517-787-2100 • www.marsdelivers.com

